

Case Study



Bermondsey Heights

Combination Package:
Scaffolding & Brickwork



Bermondsey Heights

Client: Barratt East London

Location: SE15, London

Units: 253

The Scope

Deep Contractors were appointed by Barratt East London for a scaffold and brickwork package. This landmark residential project located in South East London, comprises two blocks: one rising to an impressive 26 storeys (92 metres), and the other at 9 storeys (20 metres).



With a dedicated on-site team of 60 skilled tradesmen, Deep Contractors ensured seamless coordination and productivity throughout the construction phases.

Working at extreme heights required stringent health and safety planning. Our experienced H&S team implemented comprehensive systems, carried out regular safety audits, and ensured that every operative received detailed induction and training tailored specifically to the vertical challenges of the site. An additional full-time site supervisor was appointed to monitor safe working practices, with further oversight from our internal health and safety Director.

One of the key logistical challenges faced was the severely limited on-site storage. To resolve this our teams implemented an efficient system of controlled distribution, careful stock management, and staged usage planning. Ensuring safe site operations, avoiding material congestion, and maintaining a clean, hazard-free working environment.



Construction Delivery



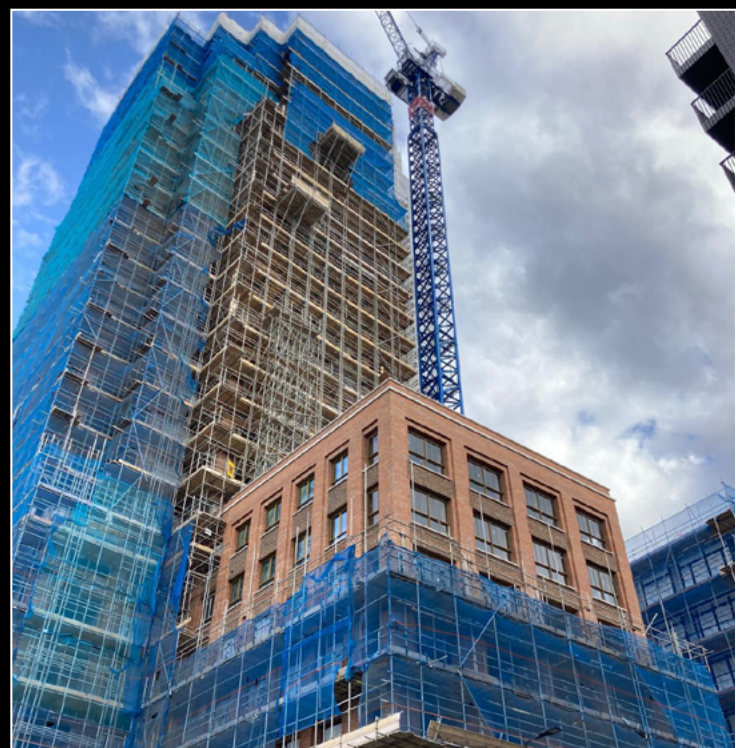
Scaffolding:

Scaffolding: Given the significant height and complexity of the site, our scaffolding division implemented a meticulously planned access solution tailored to high-rise construction. Independent scaffold structures were erected to accommodate both façade access and material movement, with progressive adaptations made in coordination with the build schedule.

Robust safety measures were a defining feature of our scaffolding delivery. All scaffold operatives were CISRS-qualified, with site-specific inductions and daily task briefings conducted to reinforce safe working practices. Full perimeter edge protection, scaffold sheeting, and dedicated loading bays were installed to safeguard both site personnel and the surrounding public.

Ongoing inspections, load assessments, and compliance checks were conducted by our in-house inspectors to ensure the system met evolving site demands without compromise.

Despite the logistical complexity and height of the blocks, all scaffolding works were delivered on time, with zero reportable incidents, a testament to Deep Contractors commitment to safety and operational excellence.



Construction Delivery



Brickwork:

Completed over a 66-week period by a dedicated workforce of 60 experienced bricklayers and labourers. The quality of finish and consistency across elevations was achieved through rigorous quality control measures, detailed planning, and close coordination with other trades.

A major challenge on this project was the restricted site storage footprint. All brickwork materials were delivered just in time, which demanded careful space management from our team. We implemented a phased materials handling strategy, with secure, controlled distribution zones and just-in-time movement of materials to working areas. This approach maximised available space, minimised disruption, and maintained safe site operations.

Working at height added another layer of complexity, requiring every brickwork operative to be trained in fall prevention and access safety. Our H&S team ensured that all scaffolding interfaces were properly managed and that safety protocols were strictly followed throughout the build.

The successful delivery of the brickwork and scaffolding package at Bermondsey Heights is a testament to Deep Contractors ability to manage technical, high-rise schemes while maintaining excellence in workmanship, logistics, and health and safety performance.



